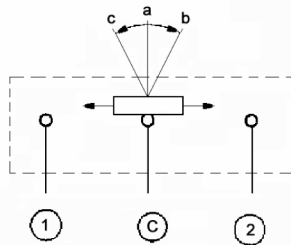
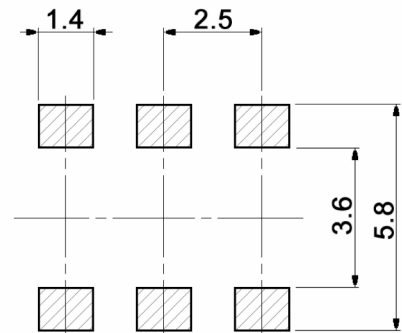


CIRCUIT DIAGRAM



P.C.B. LAND DIMENSION $\oplus 0.05$



Compliance: RohS II (2011/65/EU)

Tolerances: up to 10: ±0.2mm above 10-50: ±0.3mm	Date	Name
	02/15	dr
spec	08/15	ok
Modifications	Date	Name

DTS 316 C-T

30 32 65

Page

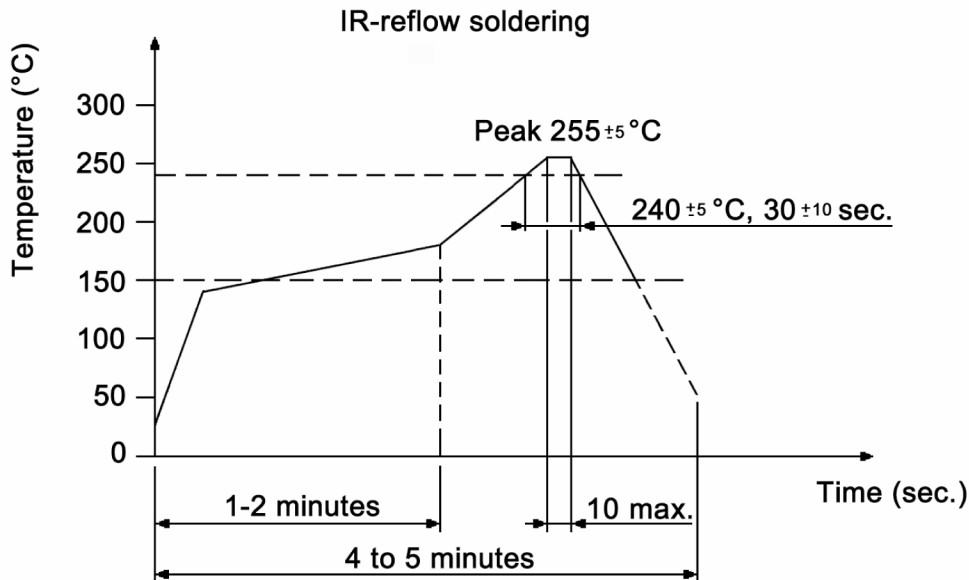
1/3

knitter-switch

Specifications:

Contact rating: 10mA, 5V DC
 Contact resistance: 500mOhm max.
 Insulation resistance: 100MOhm min. at 100V DC for 1 minute
 Dielectric strength: 100V AC (50/60Hz, 2mA) for 1 minute
 Operating temperature: -40 °C to +85 °C
 Mechanical life: 600 000 cycles
 Operating force: 35gf max.
 Material: Base / slider: PA, black
 Contact plate: PBS, silver plated
 Frame: SPTe, tin plated
 Terminal: PBS, silver plated

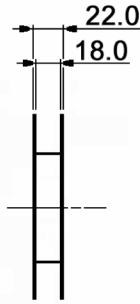
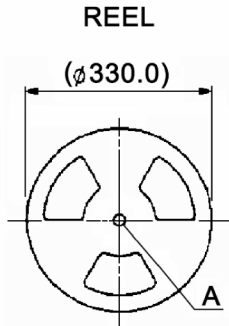
Soldering conditions:



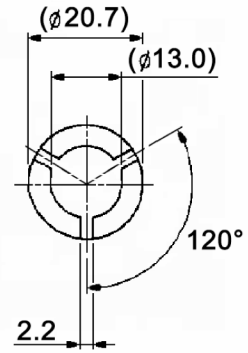
Compliance: RohS II (2011/65/EU)

Tolerances: up to 10: ±0.2mm above 10-50: ±0.3mm		Date	Name	<h1>DTS 316 C-T</h1>
		02/15	dr	
			knitter-switch	<h2>30 32 65</h2>
Modifications		Date	Name	Page 2/3

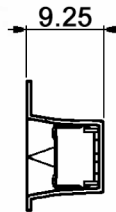
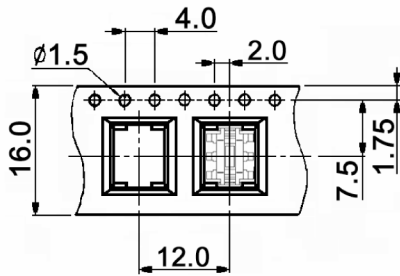
Packaging:



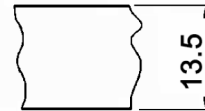
"A" DETAIL



CARRIER TAPE



COVER TAPE



Packaging unit: 550 pcs. / reel
 Compliance: RohS II (2011/65/EU)

Tolerances: up to 10: ±0.2mm above 10-50: ±0.3mm		Date	Name
		02/15	dr
Modifications	Date	Name	

DTS 316 C-T

knitter-switch

30 32 65

Page

3/3